

KONNWEI®

USER MANUAL

Bluetooth 5.0 CAR SCANNER

Dear customer, thank you for choosing a universal multibrand OBD-2 auto scanner. The device is intended for self-diagnosis of cars with information output to devices running on : Windows, Android, iOS.

Purpose of the device

The device is designed for complex diagnostics, troubleshooting, resetting, decoding error codes from the electronic control unit (ECU) of the car, reading parameters from sensors in real time and outputting information to devices running on Windows, Android, iOS. The following operating instructions are intended to help you use the device correctly without endangering anyone's safety and to keep it in good working order. Please read this section carefully and strictly follow the instructions in it.

General Precautions

- Do not drop the device or subject it to shock, as this may result in damage or malfunction.
- Do not leave the device in open sunlight, in extreme frost and in a humid environment.
- Do not place the device close to sources of electromagnetic radiation, as this may cause malfunction or damage.
- Store the device in a dry place, avoid liquid ingress.
- Do not leave the device in the OBD-2 connector of your car after finishing work.
- Do not disassemble the device or make any modifications or repairs by yourself.

Specifications

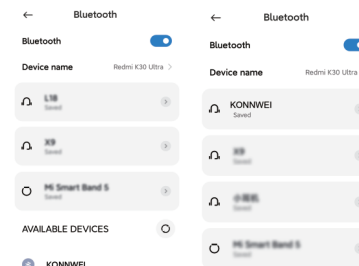
Purpose: This automotive scanner is intended for use in civil vehicles only.
 Connection type: via the diagnostic OBD-2 connector
 Working voltage: 12 - 16 V
 Protocols: ISO 9141, KWP2000, SAE J1850, CAN, J1850 VPW, J1850 PWM

Device connection

1. Carefully insert the device into the OBD-2 diagnostic connector until it stops (the connector has a trapezoidal shape and 16 pins; as a rule, it is located under the steering wheel, in the glove compartment, or in the center console in the area of the handbrake lever, depending on the make and model of your car.). Activate the device power by pressing the button on the front panel (the indicator light on the adapter will light up).



2. Connecting Android and Windows devices: Go to Bluetooth settings and search for devices" KONNWEI", and get connection .



3. Download, install and run the scanner application. The scanner is compatible with many applications.

3.1 Popular Applications :



3.2. As a rule, there is no need to make additional settings in the application, but there are applications that require you to select the type of network and the name of the device in the settings. In the application, find the connection settings (in different applications this item may be called differently), and make sure that in the "connection type" item there is the appropriate network type and the correct device is selected.

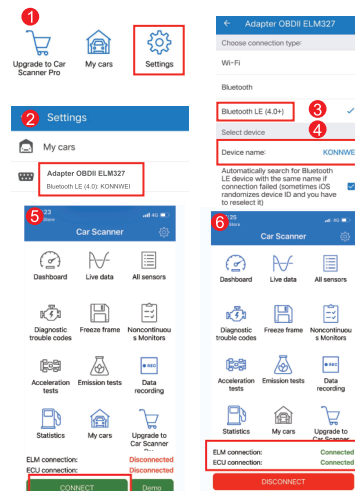
4. Connect Bluetooth

(1)Download and install "Car Scanner" app on phone from the App Store and Google Play .

(2)Open Bluetooth Icon on Phone Setting.



- Click App Menu "Settings"
- Select "Adapter OBDII ELM327"
- Select " Bluetooth LE (4.0+)"
- Select " KONNWEI"
- Back to App Menu Click "Connect"
- Connecting And Show below:
 - ELM connection:Connected
 - ECU connection:Connected



5. Turn on the ignition and start the car after ~ 10 seconds.
 6. After ~ 30 seconds, after starting the car, in the application (on the main screen), click on the "Connect" button. The device will start scanning your car and after successful initialization status "Connected" will be displayed.
 7. After successful connection, you can start diagnostics!

Possible problems

1. The device cannot find the "KONNWEI" Bluetooth network.

- Check if the adapter is powered on (button on the front panel);
- Check the power supply of your OBDII connector, it should give out 12 - 14 volts;
- Check if the car ignition is on;
- Try to turn off the ignition, remove the adapter from the socket, reinsert it, turn on the ignition;
- Try searching for a Bluetooth network using another smartphone / laptop / tablet, etc.

2. Adapter disconnects during operation.

- Make sure that during the operation of the adapter, high-power devices are not charged through the cigarette lighter;

• There are strong voltage surges in the car's network, due to which the adapter cannot work stably;

OBDII connector outputs voltage 12-14 volts

3. The adapter cannot connect to the ECU.

- Perhaps the ECU installed on your car requires additional add-ons for correct connection, namely, entering the initialization code. The initialization code is written in most applications, as many of the programs have a ready-made list of codes for various car brands;
- Try some other applications. Different applications may use the protocols differently to communicate the adapter with the ECU;
- Make sure that only one adapter application is running at a time;
- Try reconnecting from step 1.

Service

Dear customer, if you liked our device, we will be sincerely grateful for your feedback. If for some reason the device did not suit you, contact us and we will definitely resolve your issue. Please visit our shop www.konnwei.com to follow us .